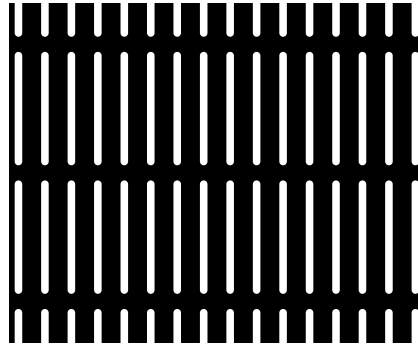


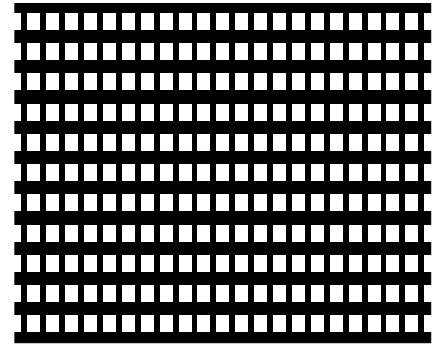
## Special perforations

In direction of perforation it is possible to realise unperforated strips or areas, depending on the perforation pattern.

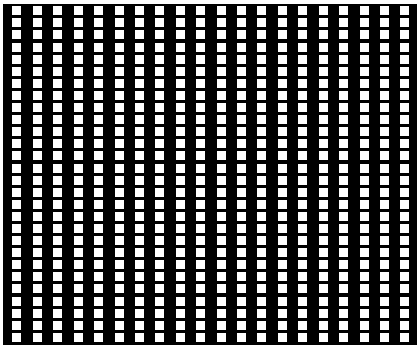
Please do not hesitate to ask for technical support in an early product development phase. It will be your advantage!



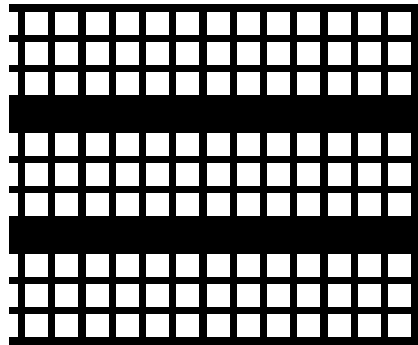
**Nr. 1441** mm  
 hole width b x h 1,0 x 15,0  
 pitch horizontal 3,5  
 pitch vertical 17,0  
 opening 23 %



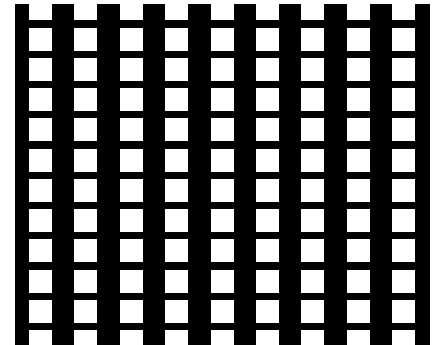
**Nr. 1489** mm  
 hole width b x h 1,7 x 2,2  
 pitch horizontal 2,5  
 pitch vertical 4,0  
 opening 37 %



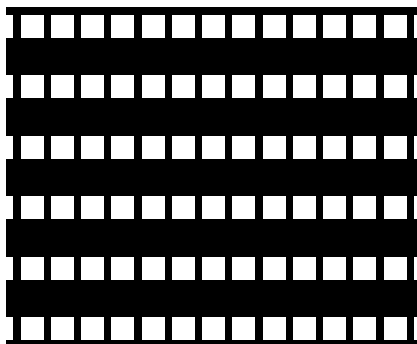
**Nr. 4016** mm  
 hole width 1,1 x 1,1  
 pitch horizontal 2,7  
 pitch vertical 1,6  
 opening 28 %



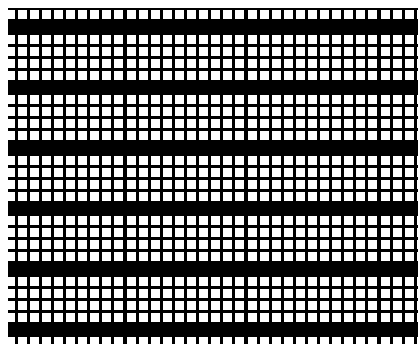
**Nr. 4033** mm  
 hole width 3,0 x 3,0  
 pitch horizontal 4,0  
 pitch vertical 3 x 4,0 -1,0  
 and 1 x 4,0+1,0  
 opening 41 %  
 from perforation 4032



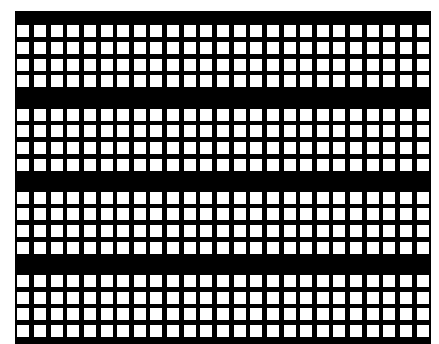
**Nr. 4035** mm  
 hole width 3,0 x 3,0  
 pitch horizontal 6,0  
 pitch vertical 4,0  
 opening 37 %



**Nr. 4058** mm  
 hole width 3,0 x 3,0  
 pitch horizontal 4,0  
 pitch vertical 8,0  
 opening 28 %  
 from perforation 4032

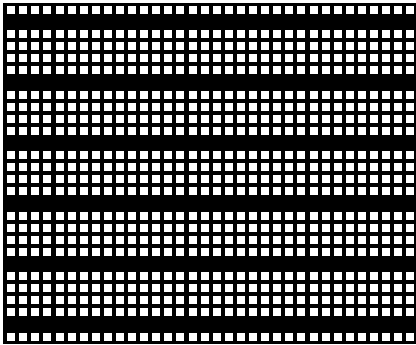


**Nr. 4066** mm  
 hole width 1,1 x 1,1  
 pitch horizontal 1,6  
 pitch vertical 4 x 1,6 -0,5  
 and 1 x 1,6+0,5  
 opening 38 %  
 from perforation 4014

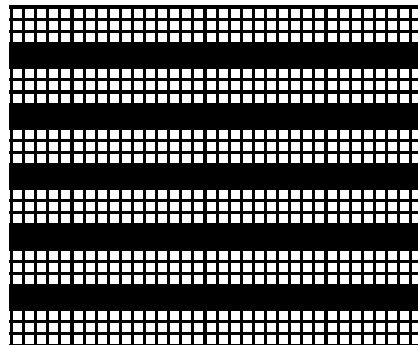


**Nr. 4073** mm  
 hole width 1,5 x 1,5  
 pitch horizontal 2,2  
 pitch vertical 4 x 2,2 -0,7  
 and 1 x 2,2+0,7  
 opening 37 %  
 from perforation 4288

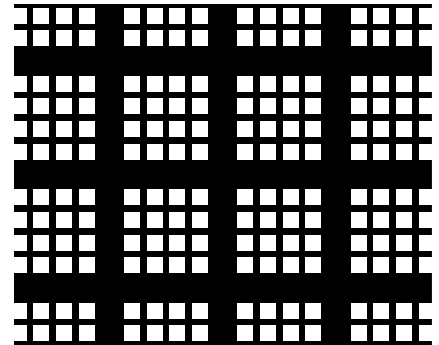
## Special perforations



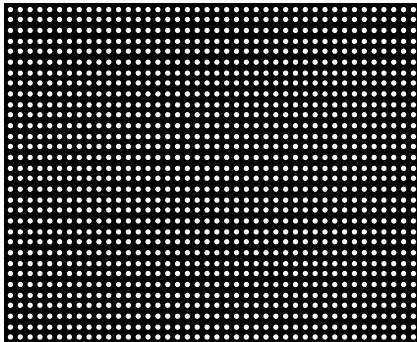
**Nr. 4076** mm  
 hole width 1,0 x 1,0  
 pitch horizontal 1,6  
 pitch vertical 4 x 1,6 -0,6  
 and 1 x 1,6+0,6  
 opening 31 %



**Nr. 4078** mm  
 hole width 1,1 x 1,1  
 pitch horizontal 1,6  
 pitch vertical 3 x 1,6 -0,5  
 and 2 x 1,6+0,5  
 opening 28 %  
 from perforation 4014



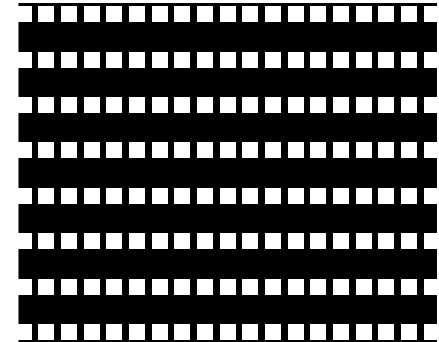
**Nr. 4083** mm  
 hole width 2,0 x 2,0  
 pitch horizontal 4 x 3,0 -1,0  
 and 1 x 3,0+1,0  
 pitch vertical 4 x 3,0 -1,0  
 and 1 x 3,0+1,0  
 opening 28 %  
 from perforation 4077



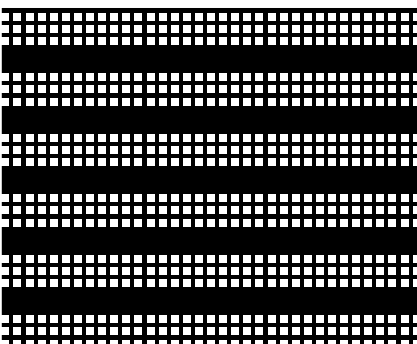
**Nr. 4084** mm  
 hole width  $\varnothing$  0,7  
 pitch horizontal 1,3  
 pitch vertical 1 x 1,3  
 and 2 x 1,45  
 opening 12 %



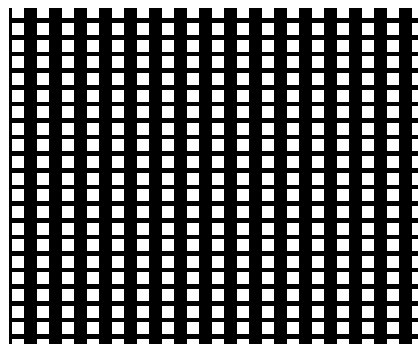
**Nr. 4085** mm  
 hole width  $\varnothing$  0,7  
 pitch horizontal 1,3  
 pitch vertical 1 x 1,3  
 and 1 x 2,9  
 opening 9 %



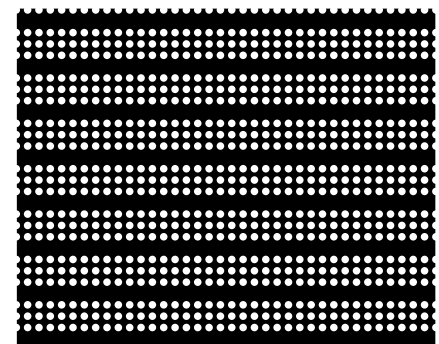
**Nr. 4146** mm  
 hole width 2,0 x 2,0  
 pitch horizontal 3,0  
 pitch vertical 6,0  
 opening 22 %  
 from perforation 4077



**Nr. 4148** mm  
 hole width 1,0 x 1,0  
 pitch horizontal 1,6  
 pitch vertical 3 x 1,6 -0,6  
 and 2 x 1,6+0,6  
 opening 24 %

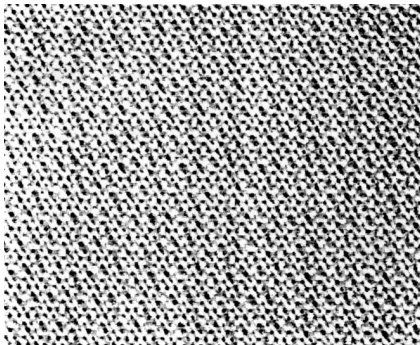


**Nr. 4173** mm  
 hole width 1,5 x 1,5  
 pitch horizontal 3,3  
 pitch vertical 2,2  
 opening 31 %

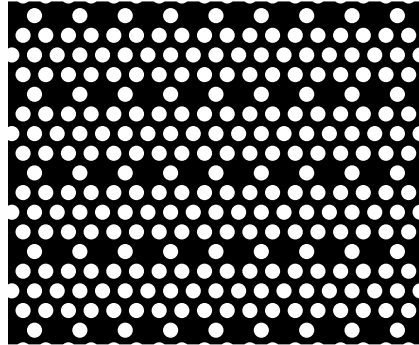


**Nr. 4184** mm  
 hole width  $\varnothing$  1,0  
 pitch horizontal 1,5  
 pitch vertical 3 x 1,5 -0,5  
 und 1 x 1,5+0,5  
 opening 26 %  
 from perforation 4027

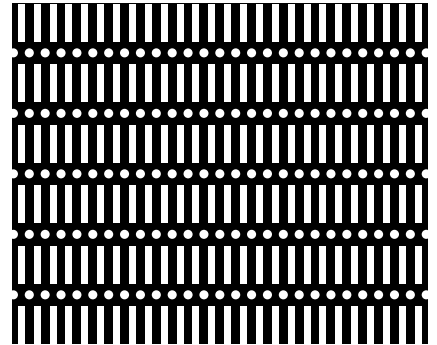
## Special perforations



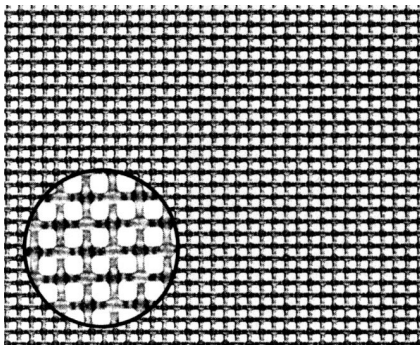
**Nr. 4200**  
**Waffle stamping**  
 Applicable up to 90 mm bandwidth.  
 Suitable for perforation 4201  
 or unperforated.



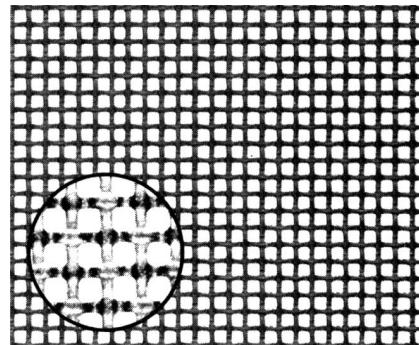
**Nr. 4214** mm  
 hole width  $\varnothing$  2,0  
 pitch horizontal 3 lines 3,0 mm  
 pitch vertical 4. line 6,0 mm  
                   2,6+2,6  
 opening 35 %



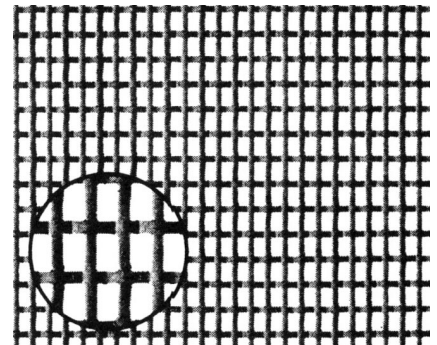
**Nr. 4215** mm  
 hole width 0,8 x 5,0 und  $\varnothing$  1,2  
 pitch horizontal 2,1  
 pitch vertical 5,9+2,1  
 opening 30 %



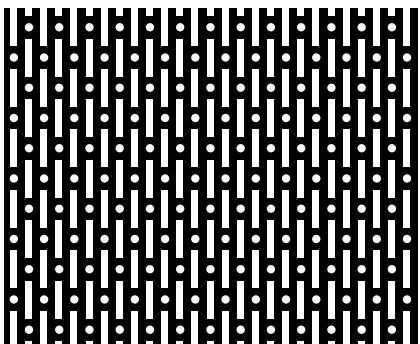
**Nr. 4293** mm  
**Wire-mesh imitation**  
 hole width 1,1 x 1,1  
 pitch horizontal 1,6  
 pitch vertical 1,6  
 opening 47 %



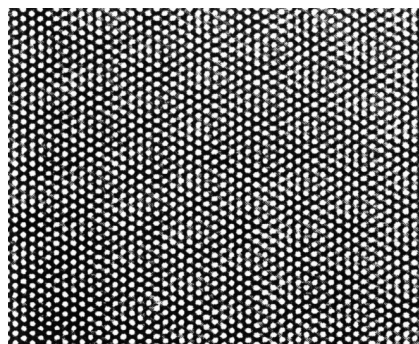
**Nr. 4300** mm  
**Wire-mesh imitation**  
 hole width 1,5 x 1,5  
 pitch horizontal 2,2  
 pitch vertical 2,2  
 opening 46 %



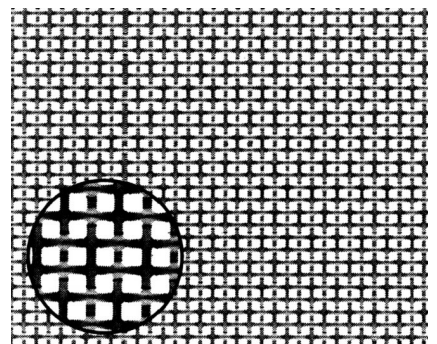
**Nr. 4311** mm  
**Wire-mesh imitation**  
 hole width 1,2 x 2,4  
 pitch horizontal 1,8  
 pitch vertical 3,0  
 opening 53,5 %



**Nr. 4314** mm  
 hole width 0,85 x 5,0 und  $\varnothing$  1,1  
 pitch horizontal 4,0 ( 2,0+2,0)  
 pitch vertical 5,9+2,1 (4,0+4,0)  
 opening 32,5 %

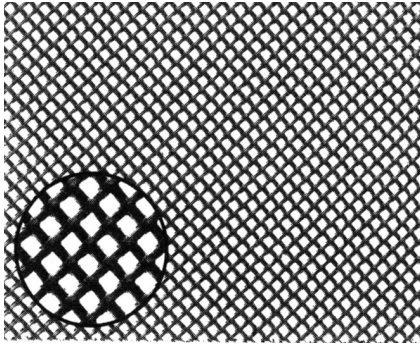


**Nr. 4316** mm  
**Waffle stamping**  
 hole width  $\varnothing$  0,8  
 pitch horizontal 1,25  
 pitch vertical 1,1+1,1  
 opening 37 %  
 Suitable for perforation 4263/4317

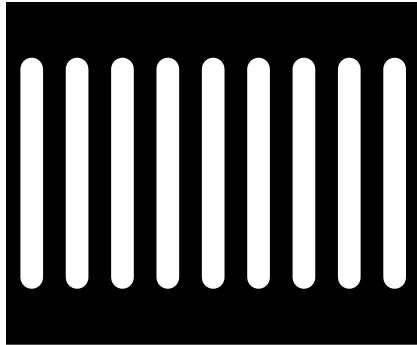


**Nr. 4320** mm  
**Wire-mesh imitation**  
 hole width 1,1 x 1,1  
 pitch horizontal 1,6  
 pitch vertical 1,6  
 opening 47 %  
 (double-mesh)

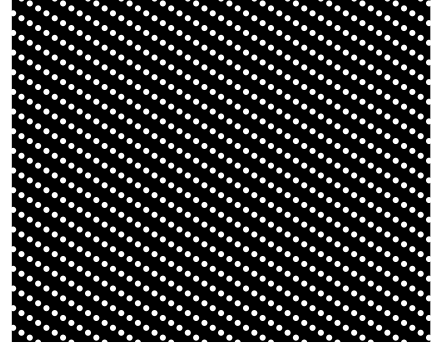
Special perforations



**Nr. 4323** mm  
**Stamping perforation**  
**expanded mesh appearance**  
 hole width 1,1 x 1,1  
 pitch horizontal 2,6  
 pitch vertical 1,13+1,13  
 opening 47 %



**Nr. 4327** mm  
 hole width b x h 3,0 x 30,0  
 pitch horizontal 6,0  
 pitch vertical 45,0  
 opening 29 %



**Nr. 4334** mm  
 hole width  $\varnothing$  0,8  
 pitch horizontal 4,4  
 pitch vertical 2,6  
 opening 17,5 %