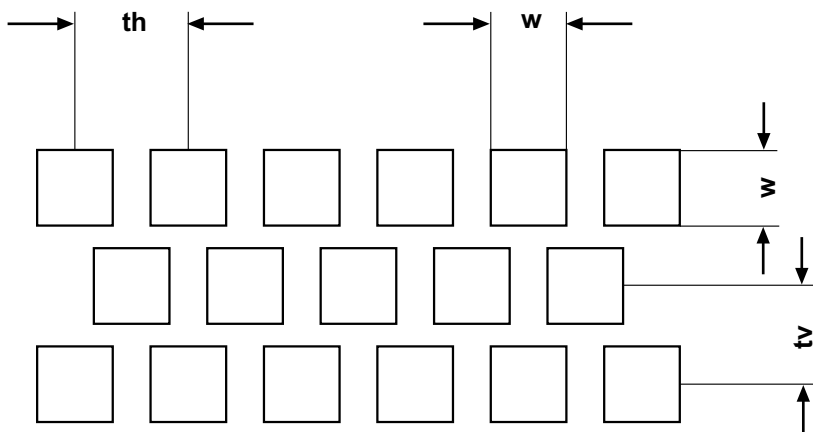


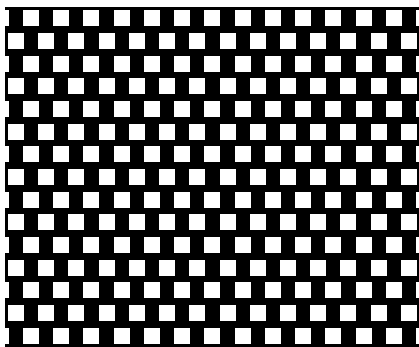
Square holes in staggered lines



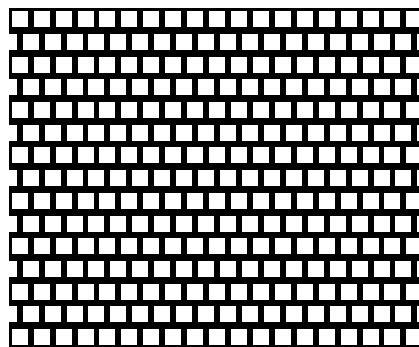
- w** = hole width
- th** = pitch horizontal
- tv** = pitch vertical

In direction of perforation it is possible to realise unperforated strips or areas, depending on the perforation pattern.

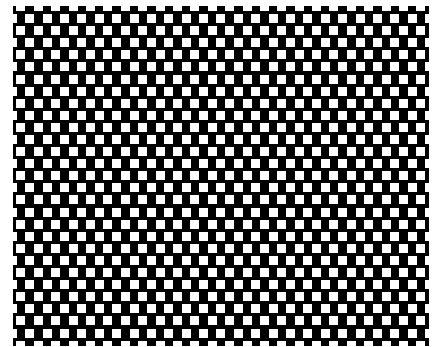
Please do not hesitate to ask for technical support in an early product development phase. It will be your advantage!



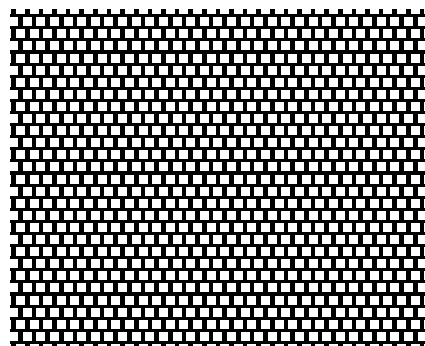
Nr. 1431
 hole width 2,0 mm
 pitch horizontal 4,0 mm
 pitch vertical 3,0+3,0 mm
 opening 33 %



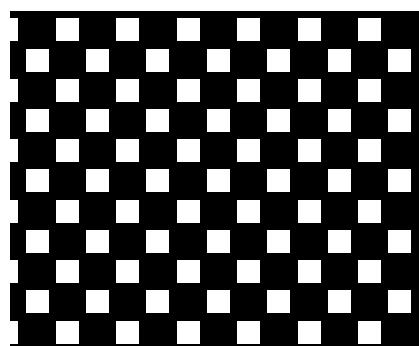
Nr. 1445
 hole width 2,0 mm
 pitch horizontal 2,9 mm
 pitch vertical 3,0+3,0 mm
 opening 46 %



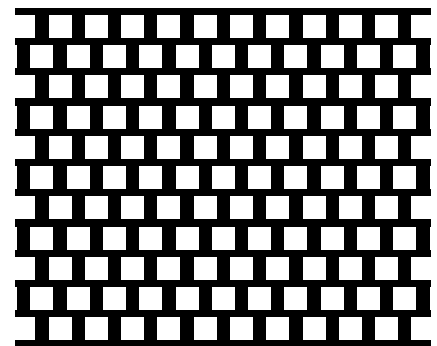
Nr. 4015
 hole width 1,1 mm
 pitch horizontal 2,3 mm
 pitch vertical 1,6+1,6 mm
 opening 33 %



Nr. 4017 (Qv 1,1 - 1,8)
 hole width 1,1 mm
 pitch horizontal 1,8 mm
 pitch vertical 1,6+1,6 mm
 opening 42 %



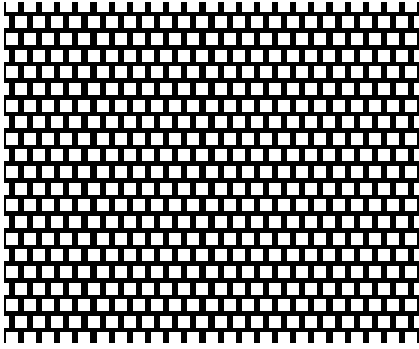
Nr. 4034
 hole width 3,0 mm
 pitch horizontal 8,0 mm
 pitch vertical 4,0+4,0 mm
 opening 28 %
 derived from Perforation 4032



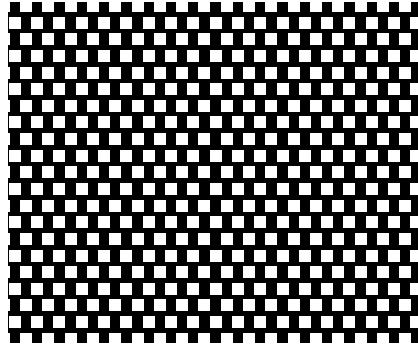
Nr. 4036
 hole width 3,0 mm
 pitch horizontal 4,8 mm
 pitch vertical 4,0+4,0 mm
 opening 47 %

Square holes in staggered lines

Bergmann&Hillebrand



Nr. 4171 mm
hole width 1,5
pitch horizontal 2,4
pitch vertical 2,2+2,2
opening 43 %



Nr. 4172 mm
hole width 1,5
pitch horizontal 2,95
pitch vertical 2,2+2,2
opening 35 %

Bergmann&Hillebrand